

Bill White presents



FEATHER TOP

CUSTOM HOMESITES



presents

The Vision for a Legacy.



FEATHERTOP
CUSTOM HOMESITES

THE VISION



THIS IS YOUR MOUNTAIN

Big White Ski Resort consistently earns awards and recognition from leading ski authorities around the world for its idyllic conditions, its wide variety of terrain, and its commitment to building a world-class, family-oriented ski community. This is where you want to be.

SPECTACULARLY SITUATED

Feathertop is an exclusive Mountainfront neighbourhood nestled within the world renowned Big White Ski Resort. Central to all the attractions of the Okanagan Valley, Feathertop awaits you in this private, unparalleled location.



A NEW NEIGHBOURHOOD

Welcome to Feathertop – a unique, private enclave in the heart of Big White Ski Resort. This premium mountainside location offers breathtaking views, privileged access and the rareness typically associated with exceptional lakefront homes. At Feathertop, the full mountain experience is right outside your door.

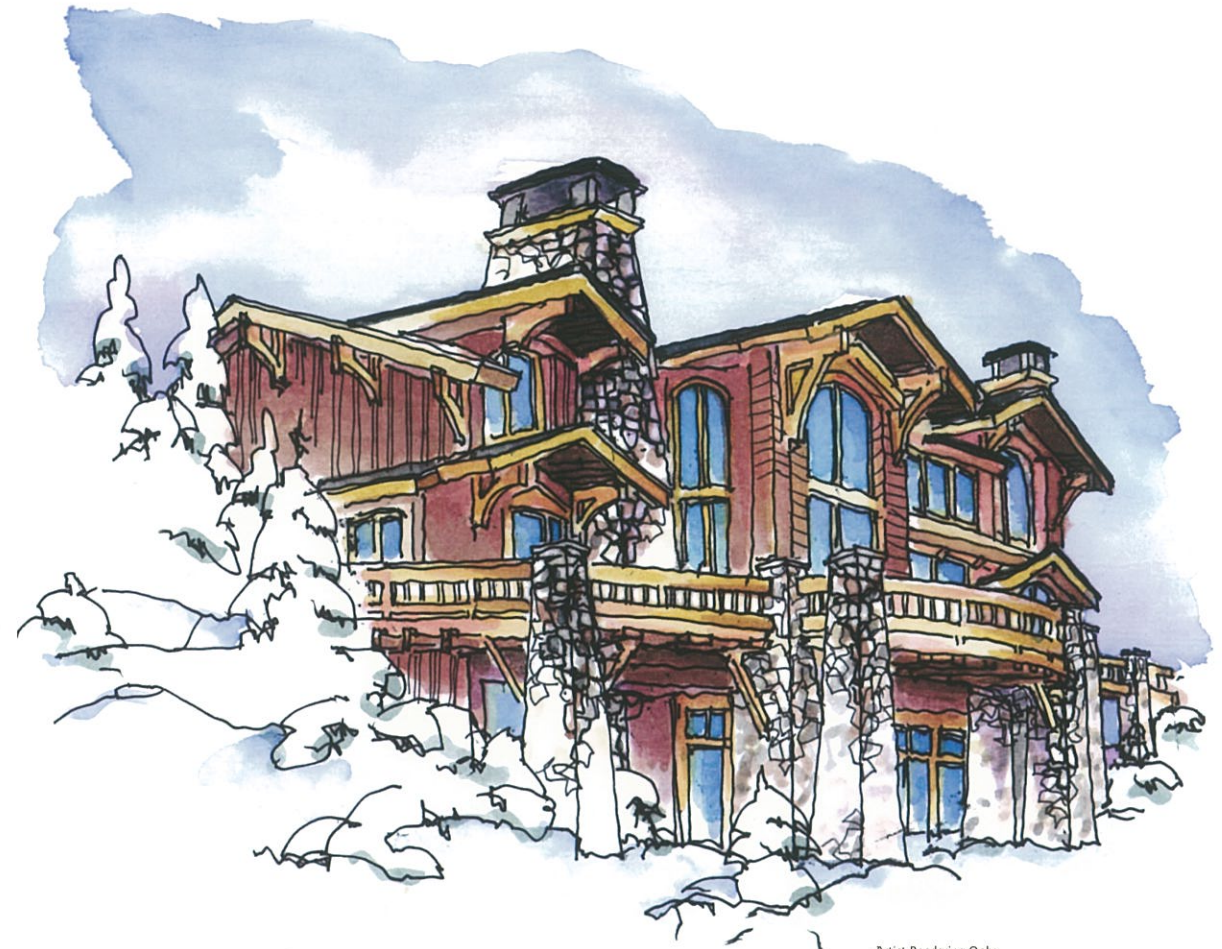
THE VISION UNFOLDS

One of the most important factors in Canadian history is the building of the Canadian Pacific Railway. In addition to helping forge a nation from coast to coast, the railways were also responsible for creating and building some of the grandest mountain resort hotels and distinguished park lodges found in the western mountains of North America.

The designers of these buildings derived their inspiration from the prevailing stylistic tendencies of their times – such as the rustic Adirondack style – all the while allowing the surrounding mountainous landscape to influence their designs.



Banff Springs Hotel



Artist Rendering Only

THE LEGACY CONTINUES

The architectural style that evolved – with its mixture of logs, timber and native stone and detailed decorative rustic gables that punctuates pitched roofs – set the basis for the architectural style and character adopted by Feathertop. Along with traditional craftsmanship, the use of local and readily available materials, finished in natural colors that emerge and blend with the wooded alpine and mountain peaks, creates harmony with the natural beauty found at Big White Ski Resort and its surrounding environment.

Each chalet embodies the timelessness of this traditional style which has its roots entrenched within the commitment of spirit and destiny that helped forge this country.

MOUNTAINFRONT LIVING





Mountainfront Living

THE BEST OF BOTH WORLDS

The vision that brought form to the architecture of Feathertop is the same vision that realized the unparalleled opportunity of creating a neighbourhood directly on the mountainfront. Offering the same rareness typically associated with exceptional lakefront property, Feathertop is considered the Lakefront of the Mountains.

Mountainfront Living not only complements your summer lifestyle, it also offers the best in winter recreation. This is your time to build your family's dream home; enjoy a world of alpine lifestyle opportunities and live the best of both worlds.

"When we first envisioned Feathertop, we had high expectations. Now, with all of the pieces in place, I believe we're creating the ultimate in Mountainfront Living in North America."

PAUL PLOCKTIS, FEATHERTOP DEVELOPER

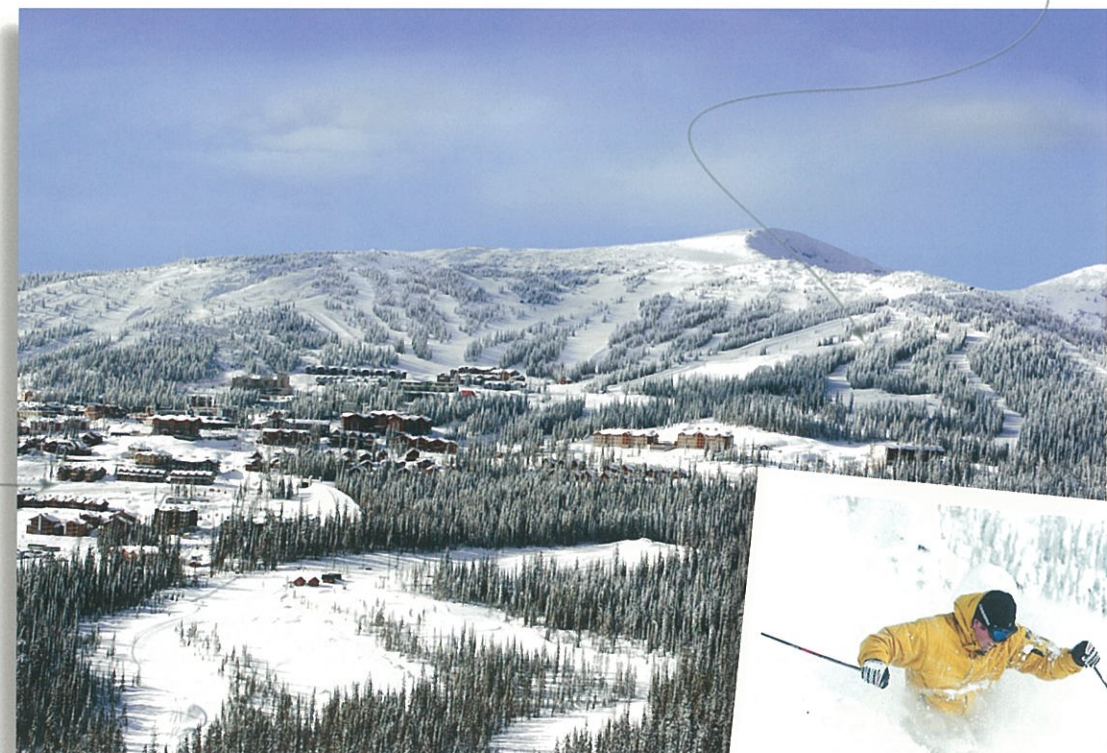


Artist Rendering Only

Big White village



*Complement your summer lifestyle
with premium Mountainfront Living*

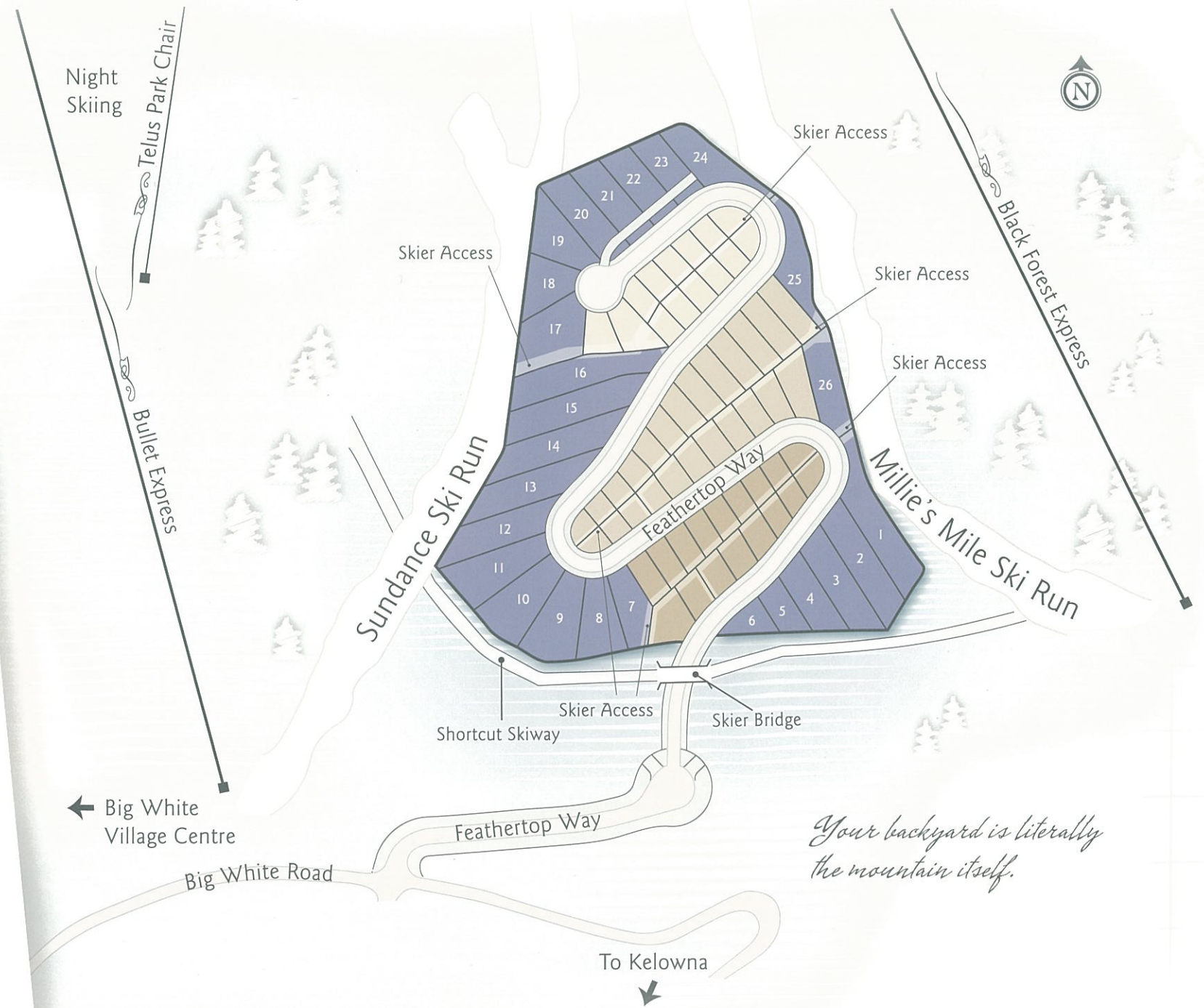


ONLY 26 CUSTOM HOMESITES TO CHOOSE FROM

Feathertop custom homesites permit you the luxury to build when you are ready. Choose your own architect and builder who can help you realize your vision – precisely as you see it. Each Feathertop custom homesite is, on average, a third of an acre which grants you the freedom to build your dream home in your own private wonderland. With homesites directly located on either the Sundance or Millie's Mile ski runs, you can embrace the alpine lifestyle the moment you step out your front door. Be among the privileged few to live in a neighbourhood so exclusive, such an offering will never be available again.



Steps from the village, each homesite represents a true ski-in/ski-out living experience.



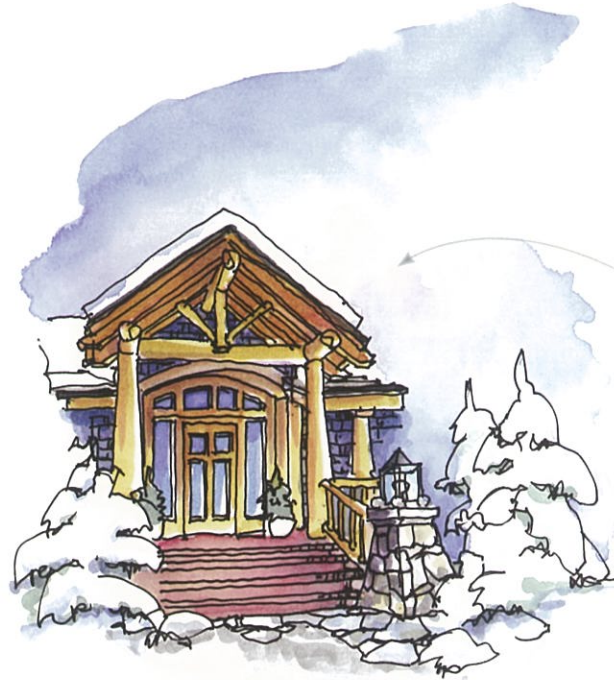
Your backyard is literally the mountain itself.

CUSTOMIZE YOUR DREAM



YOURS TO DEFINE

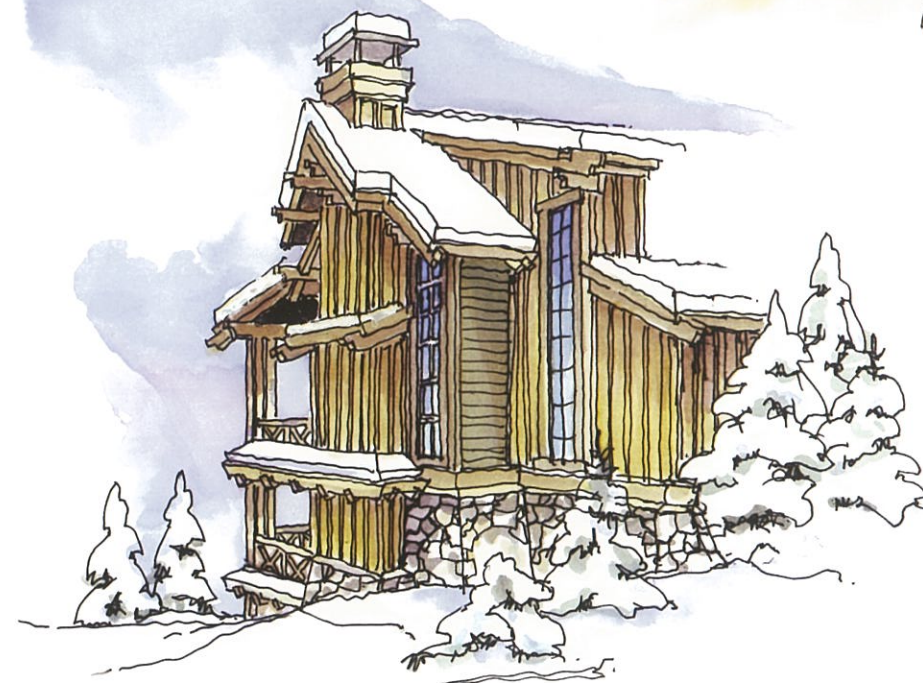
How will you define your Mountainfront experience? Characterize your Custom Homesite in harmony with the natural beauty found at Big White and its environment; allow the surrounding mountainous landscape to influence you.



Heavy post and beam timber construction roots your home on the mountain.



Reflect the natural conditions, scale and roughness of the surrounding landscape through the selection of building materials for your home.



Choose colours from the natural landscape... deep jewel tones in shades of jade, blueberry, sage and adobe to enhance the neighbourhood.



INSPIRING CHOICES

Be inspired by traditional craftsmanship and the use of readily available local materials; indigenous stone, cedar logs, rugged timber beams. You imagine it. You create it. You live it.



Detailed gables and dormers accent and punctuate multiple roof slopes and complement the surrounding mountain peaks.

Constructed from stone or brick, chimneys deserve to be of substantial proportion and harken back to a traditional mountain need.



Articulated wood railings with extended covered balconies enhances your appreciation of the view.



Draw inspiration from other homes while making your custom homesite uniquely yours.

LIVING YOUR DREAM

The experiences, special moments, and family traditions shared year after year form precious, long-lasting memories that are passed on from one generation to the next. Feathertop invites you to be a part of this experience. Build a lasting legacy of your own — *for generations to come.*

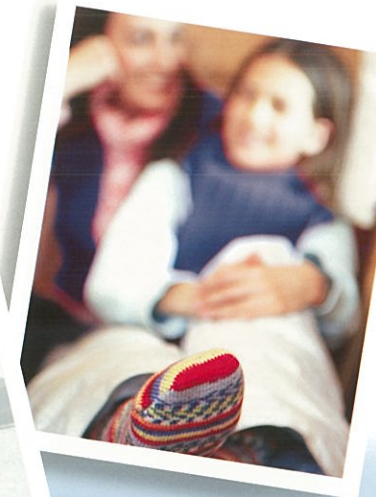


Be the first to enjoy the fresh powder on the ski runs

Josh Foster, 2006 Canadian Interski Team Member



*Fantastic Early Winter Conditions
- December 2006*



Live in the heart of this outdoor wonderland



Watch your family have the time of their lives from the comfort of your living room

BENEFITS OF OWNERSHIP



MOUNTAINFRONT LOCATION

- Premium mountainside as rare and distinctive as lakefront property.
- The best ski-in/ski-out location at Big White Ski Resort – with homesites perfectly situated on either the Sundance or Millie's Mile ski runs.
- Easy access to the Big White Village and other extraordinary amenities including skating, Mega Snow Coaster tube ride, nordic skiing and Telus Park.



SPECTACULAR VIEWS

- Breathtaking views of the Monashee Mountains.
- Your backyard is literally the mountain itself!
- Armchair view of the surrounding mountain activities – watch your family have the time of their lives from the comfort of your living room.
- Be the first to see the fresh powder on the ski runs – right outside your door.



A RARE OPPORTUNITY IN BIG WHITE SKI RESORT'S MOST EXCLUSIVE NEIGHBOURHOOD

- Enjoy the exclusivity and serenity in a private enclave nestled between two ski runs.
- Own the rarest piece of Mountainfront available at Big White Ski Resort for your family's lifestyle and legacy.
- Maximize your return on lifestyle. As Canada's #1 Family Resort Destination, Big White Ski Resort will attract guests and recreational home-buyers for many years to come.
- As the village evolves and resort real estate continues to grow in demand, it's an investment with a fantastic view ahead.

For more information, contact one of our property specialists today.

FeathertopBigWhite.com | 1.888.765.9253 | Tel. 250.765.9253

Discovery Centre Open Daily – opposite Village Centre Mall, Big White Ski Resort Kelowna, BC